

▶ **Getting started**

**Unpacking**

Check that you have the following items:

- The speaker system
- The transmitter (SRS-RF90RK only)
- AC power adaptor (2 for SRS-RF90RK) (1 for SRS-RF90R)
- Connecting cord (phono plugs ↔ stereo mini plug), 1 m (SRS-RF90RK only)

# Wireless Stereo Speaker System

Operating Instructions

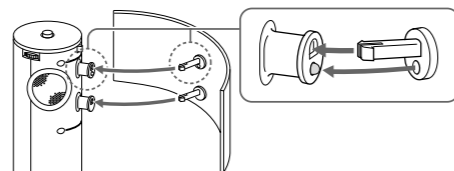
Mode d'emploi

Manual de instrucciones

**Hooking up the system**

**Attaching the supplied reflector to the speaker system**

Insert the plugs until its base is settled firmly as illustrated.



**Connecting the transmitter to audio/video equipment**

For customers buying the SRS-RF90R

You can use the transmitter supplied with the MDR-RF915RK or MDR-RF945RK. If you have already set the transmitter, the following hookup of the transmitter is not required. However, you cannot use a transmitter supplied with a cordless/wireless headphone system other than the above models.

For customers buying the SRS-RF90RK

Set the transmitter by the following steps. Select the hookup depending on the jack type of the audio/video equipment you want to connect the transmitter to.

**A To connect to a LINE OUT or REC OUT**

Set the transmitter by the following steps.

Model No. \_\_\_\_\_  
Transmitter \_\_\_\_\_  
Speaker system \_\_\_\_\_

Serial No. \_\_\_\_\_  
Transmitter \_\_\_\_\_  
Speaker system \_\_\_\_\_

to AUDIO IN B jack

to LINE OUT or REC OUT jacks

to stereo mini jack

to headphones jack (stereo phone jack)

to headphones or LINE OUT jack (stereo mini jack)

to headphones or LINE OUT jack (stereo mini jack)

to headphones or LINE OUT jack (stereo mini jack)

to headphones or LINE OUT jack (stereo mini jack)

to headphones or LINE OUT jack (stereo mini jack)

to headphones or LINE OUT jack (stereo mini jack)

to headphones or LINE OUT jack (stereo mini jack)

to headphones or LINE OUT jack (stereo mini jack)

to headphones or LINE OUT jack (stereo mini jack)

to headphones or LINE OUT jack (stereo mini jack)

to headphones or LINE OUT jack (stereo mini jack)

to headphones or LINE OUT jack (stereo mini jack)

to headphones or LINE OUT jack (stereo mini jack)

to headphones or LINE OUT jack (stereo mini jack)

to headphones or LINE OUT jack (stereo mini jack)

to headphones or LINE OUT jack (stereo mini jack)

to headphones or LINE OUT jack (stereo mini jack)

to headphones or LINE OUT jack (stereo mini jack)

to headphones or LINE OUT jack (stereo mini jack)

to headphones or LINE OUT jack (stereo mini jack)

to headphones or LINE OUT jack (stereo mini jack)

to headphones or LINE OUT jack (stereo mini jack)

to headphones or LINE OUT jack (stereo mini jack)

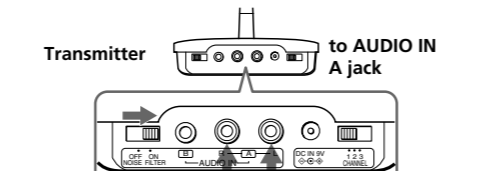
to headphones or LINE OUT jack (stereo mini jack)

to headphones or LINE OUT jack (stereo mini jack)

to headphones or LINE OUT jack (stereo mini jack)

**C To connect to TV, etc.**

If noise occurs when the transmitter is connected to the headphone jack of your TV or VCR, set the NOISE FILTER switch to ON.



to stereo mini jack

to stereo mini jack

to stereo mini jack

to stereo mini jack

to stereo mini jack

to stereo mini jack

to stereo mini jack

to stereo mini jack

to stereo mini jack

to stereo mini jack

to stereo mini jack

to stereo mini jack

to stereo mini jack

to stereo mini jack

to stereo mini jack

to stereo mini jack

to stereo mini jack

to stereo mini jack

to stereo mini jack

to stereo mini jack

to stereo mini jack

to stereo mini jack

to stereo mini jack

to stereo mini jack

to stereo mini jack

to stereo mini jack

to stereo mini jack

to stereo mini jack

to stereo mini jack

to stereo mini jack

to stereo mini jack

to stereo mini jack

to stereo mini jack

to stereo mini jack

to stereo mini jack

to stereo mini jack

to stereo mini jack

to stereo mini jack

to stereo mini jack

to stereo mini jack

to stereo mini jack

to stereo mini jack

to stereo mini jack

to stereo mini jack

to stereo mini jack

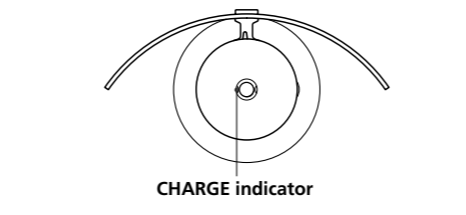
to stereo mini jack

to stereo mini jack

to stereo mini jack

to stereo mini jack

**2** The CHARGE indicator on the speaker system will light up to indicate that the battery is being charged.



CHARGE indicator

CHARGE indicator

CHARGE indicator

CHARGE indicator

CHARGE indicator

CHARGE indicator

CHARGE indicator

CHARGE indicator

CHARGE indicator

CHARGE indicator

CHARGE indicator

CHARGE indicator

CHARGE indicator

CHARGE indicator

CHARGE indicator

CHARGE indicator

CHARGE indicator

CHARGE indicator

CHARGE indicator

CHARGE indicator

CHARGE indicator

CHARGE indicator

CHARGE indicator

CHARGE indicator

CHARGE indicator

CHARGE indicator

CHARGE indicator

CHARGE indicator

CHARGE indicator

CHARGE indicator

CHARGE indicator

CHARGE indicator

CHARGE indicator

CHARGE indicator

CHARGE indicator

CHARGE indicator

CHARGE indicator

CHARGE indicator

CHARGE indicator

CHARGE indicator

CHARGE indicator

CHARGE indicator

CHARGE indicator

CHARGE indicator

CHARGE indicator

CHARGE indicator

CHARGE indicator

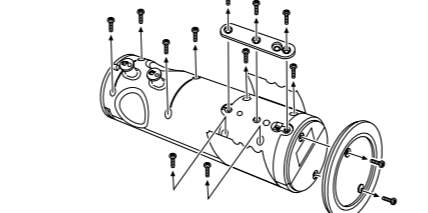
CHARGE indicator

CHARGE indicator

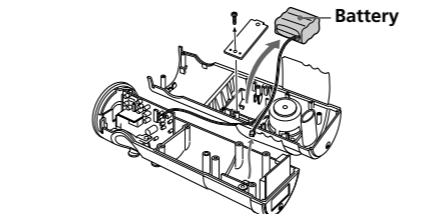
**Disposing of the speaker system**

Be sure to remove the built-in rechargeable batteries from the speaker system before you dispose of the speaker system.

1 Remove 13 screws from the speaker system using a cross-point screw driver as illustrated below.



2 Open the cabinet of the speaker system and remove the one screw to remove the rechargeable battery as illustrated.



▶ **Additional information**

**Precautions**

- When the transmitter is not to be used for a long period of time, disconnect the AC power adaptor from the AC outlet holding the plug. Do not pull on the cord.

**Notes on the location you set the speaker system**

- Do not leave the wireless speaker system in a location subject to:
  - Direct sunlight or extremely high temperature such as near a heater or in a car with its windows closed.
  - High humidity such as in a bathroom.
  - Excessive dust or sandy places.
  - The speaker system is magnetically shielded, but do not put a recorded tape, watch, cash card or floppy disk in front of the speaker system.
- Set up the speaker system on a flat surface.
- Depending on where you set the speaker system, it may fall down. Do not leave valuables near the speaker system.

**Notes on charging the battery**

- When you charge the rechargeable battery, use the supplied AC adaptor only.
- The charging time differs depending on usage conditions of the battery.
- When you use the battery for the first time or the battery is not to be used for a long time, the battery duration time may become shorter than the usual duration time. However, after you charge the battery several times, the battery duration time returns to its normal condition.
- If the battery duration time becomes half of its normal time even after the battery is charged fully, the battery is worn out. In this case, consult your nearest Sony dealer.

**Notes on using the speaker system**

- Do not disassemble the speaker unit, built-in amplifier or cabinet.
- Do not insert an object into the jack. Doing so may cause a malfunction.
- Keep the volume at a moderate level to prevent distortion.
- Do not carry the speaker unit by its reflector. If you do so, the speaker system may detach from the reflector.

**Note on cleaning**

Clean the cabinet of the speaker system with a soft cloth slightly moistened with water or a mild detergent solution. Do not use any type of abrasive pad, scouring powder or solvent such as alcohol or benzene as it may mar the finish of the cabinet.

**When the color of your monitor screen becomes irregular**

Because this speaker system is magnetically shielded, you can set it up near a monitor. But depending on the model of the monitor, color irregularity may occur.

**To correct the color irregular**

Turn off the monitor, and then turn it on again after 15 to 30 minutes.

**If color irregularity remains after performing the above**

- Separate the monitor and the speaker system.
- Make sure that no magnetic object, such as may be attached to a door of shelf, healthcare device or toys, etc., is located near the speaker system.

If you have any questions or problems concerning the system that are not covered in this manual, please consult your nearest Sony dealer.

Be sure to bring the speaker system and the transmitter to the Sony dealer when requiring repair work.

**Troubleshooting**

**No sound/Muffled sound**

- Check the connection of the audio/video equipment.
- Check that the audio/video equipment is turned on.
- Turn up the volume on the connected audio/video equipment, if the transmitter is connected to the headphones jack.
- Change the radio frequency with the CHANNEL selector on the transmitter, then press the TUNING button again.
- The speaker system's POWER indicator light is weak or turned off.
  - Charge the built-in rechargeable battery or if the POWER indicator is still off after charging the built-in rechargeable battery, take the speaker system to a Sony dealer for replacement of the rechargeable battery.
- If you connect the transmitter to the LINE OUT or REC OUT jack of an audio reproducer, make sure that the NOISE FILTER switch is set to OFF.
- Make sure that the NOISE FILTER switch is set to either ON or OFF (If the switch gets stuck between ON and OFF, the sound will be cut off).

**Distortion**

- If the transmitter is connected to the headphones jack, turn down the volume of the connected audio/video equipment. If the connected audio/video equipment has bass boost function, set its function to OFF.
- If the connected audio/video equipment has a LINE OUT or REC OUT jack.
- Change the radio frequency with the CHANNEL selector on the transmitter.
- The speaker system's POWER indicator light is weak or turned off.
  - Charge the built-in rechargeable battery or if the POWER indicator is still off after charging the built-in rechargeable battery, take the speaker system to a Sony dealer for replacement of the rechargeable battery.
- If you connect the transmitter to LINE OUT or REC OUT jack of an audio reproducer, make sure that the NOISE FILTER switch is set to OFF.

**Loud background noise**

- Move closer to the transmitter. As you move away from the transmitter, more noise is likely to be heard.
- If the transmitter is connected to the headphones jack, turn up the volume of the connected audio/video equipment.
- Change the radio frequency with the CHANNEL selector on the transmitter, then press the TUNING button again.
- The speaker system's POWER indicator light is weak or turned off.
  - Charge the built-in rechargeable battery or if the POWER indicator is still off after charging the built-in rechargeable battery, take the speaker system to a Sony dealer for replacement of the rechargeable battery.
- If you connect the transmitter to the LINE OUT or REC OUT jack of an audio reproducer, make sure that the NOISE FILTER switch is set to OFF.

**The battery duration time is short**

- If you use the battery under the temperature lower than 0°C (32°F), this is not a malfunction.
- The battery life may end. If the battery duration time becomes half of its normal time even after the battery is charged fully, consult your nearest Sony dealer.

**Specifications**

<b>General</b>	Carrier frequency 913.5 - 914.5 MHz
	Channel Ch1, Ch2, Ch3
	Modulation FM stereo
<b>Transmitter (SRS-RF90RK only)</b>	
Power source	DC 9 V: supplied AC power adaptor (AC-S901)
Audio input	phono jacks/stereo mini jack
Input impedance	33 kΩ/51 Ω switchable
Dimensions	Approx. 136 × 100 × 136 mm (6 × 4 1/2 × 6 in.) (w/h/d)
Mass	Approx. 146 g (5.2 oz.)
<b>Speaker system SRS-RF90RK, SRS-RF90R</b>	
Speaker system	2 way magnetically shielded
Enclosure type	Bass reflex
Speaker units	tweeter: 30 mm × 2 woofer: 57 mm × 1
Power source	DC 9 V: supplied AC adaptor (AC-S906T)
Rated output	Built in amplifiers total 4W (while using the supplied AC adaptor) *power output: Tweeter: 0.25W + 0.25W < 10% T.H.D., 5 kHz 24 ohms Woofer: 3.5W < 10% T.H.D., 1kHz 6 ohms
Dimensions	Approx. 234 × 300 × 126 mm (9 1/4 × 11 7/8 × 5 in.) (w/h/d)
Mass	Approx. 905 g (31.9 oz.) incl. built-in rechargeable battery
<b>Built-in Ni-MH rechargeable battery</b>	
Voltage	7.2 V
Capacity	700 mAh
Duration time	Approx. 4 hours (with the 10 mW reflector light OFF)
Charging time	Approx. 28 hours (from fully discharged to fully charged)

**Supplied accessory**

The transmitter (SRS-RF90RK only)  
AC adaptor (2 for SRS-RF90RK) (1 for SRS-RF90R)  
Connecting cord (phono plug-stereo miniplug (1m) (1) (SRS-RF90RK only)

Operating instructions (1)

**Optional accessory**

Plug adaptor PC-236MS (stereo mini plug ↔ monaural mini plug)

Design and specifications are subject to change without notice.

**Français**

**AVERTISSEMENT**

Pour éviter tout risque d'incendie ou d'électrocution, ne pas exposer cet appareil à la pluie ou à l'humidité. Pour prévenir tout risque d'électrocution, n'ouvrez jamais le coffret. Adressez-vous à un personnel qualifié uniquement pour toute intervention sur l'appareil.

**Avertissement**

Soyez avisé que toute modification non expressément approuvée dans le présent mode d'emploi pourrait entraîner l'annulation de vos droits d'utilisation de ce produit.

**Pour les utilisateurs au Canada**

Son utilisation est autorisée seulement aux conditions suivantes: (1) il ne doit pas produire de brouillage et (2) l'utilisateur du dispositif doit être prêt à accepter tout brouillage radioélectrique reçu, même si ce brouillage est susceptible de compromettre le fonctionnement du dispositif.

**Pour les utilisateurs aux Etats-Unis et au Canada**

**RECYCLAGE DES ACCUMULATEURS A HYDRURE METALLIQUE DE NICKEL**

Les accumulateurs à hydrure métallique de nickel sont recyclables. Vous pouvez contribuer à préserver l'environnement en rapportant les piles usées dans un point de collection et recyclage le plus proche.

Pour plus d'informations sur le recyclage des accumulateurs, téléphonez le numéro gratuit 1-800-822-8837 (Etats-Unis et Canada uniquement), ou visitez <http://www.rbrcc.org/>

Avertissement : Ne pas utiliser des accumulateurs à hydrure métallique de nickel qui sont endommagés ou qui fuient.

**Bienvenue !**

Nous vous remercions d'avoir fait l'acquisition du système d'enceinte stéréo sans fil SRS-RF90RK / RF90R de Sony. Avant de faire fonctionner cet appareil, lisez attentivement le présent mode d'emploi et conservez-le pour toute référence ultérieure.

Cet appareil offre, entre autres, les caractéristiques suivantes :

- Système sans fil vous permettant l'utilisation sans fils d'enceinte encombrants.
- Longue portée de transmission des signaux allant jusqu'à environ 46 m (150 pi).
- Trois options de canaux de transmission permettant une réception optimale des signaux.
- Fonction de syntonisation automatique à l'enceinte.
- Réflecteur fixé au système d'enceinte offrant une reproduction sonore haute fidélité.
- Construction stéréo à boîtier unique offrant un large champ sonore.
- Deux possibilités d'alimentation : avec l'adaptateur CA fourni ou la batterie rechargeable intégrée.
- Conception novatrice et originale avec éclairage bleu, un design élégant qui convient bien au décor de n'importe quelle pièce.

**Remarques sur la qualité de transmission**

Comme le système de cet appareil utilise des signaux de très haute fréquence dans la bande des 900 MHz, l'environnement de l'appareil peut entraîner une détérioration de la qualité de transmission. Les exemples suivants illustrent les situations pouvant réduire la plage de transmission et pertur

